



 **PROTEK** 

VF/ VMC /VMP

AIR PINCH VALVE



VF series pneumatic pinch valve



● Pinch Valves as shut-off Valves

Due to its simple structure, LEGEND's air operated pinch valve represents a particularly low cost/economic shut-off valve solution, because a separate drive is not required for actuating them.

In fact, only a 3/2-way solenoid valve or pilot valve is needed to control them.

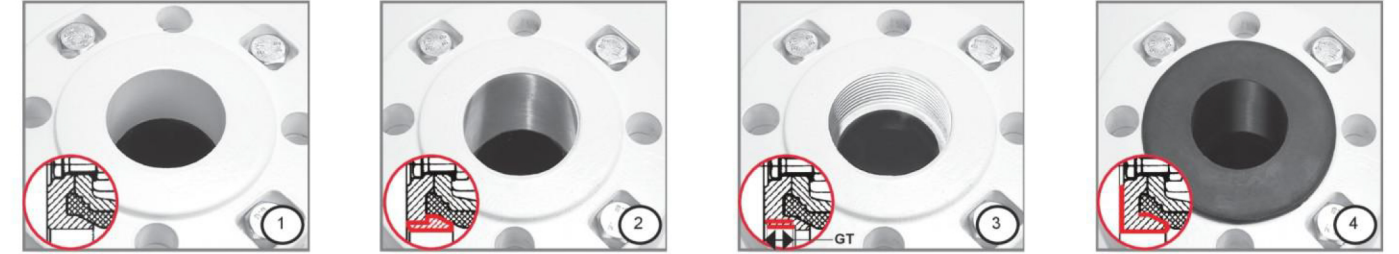
Pinch Valves comply with PED (97/23/EC)

Materials:
Body: Aluminum
Flange: Aluminum

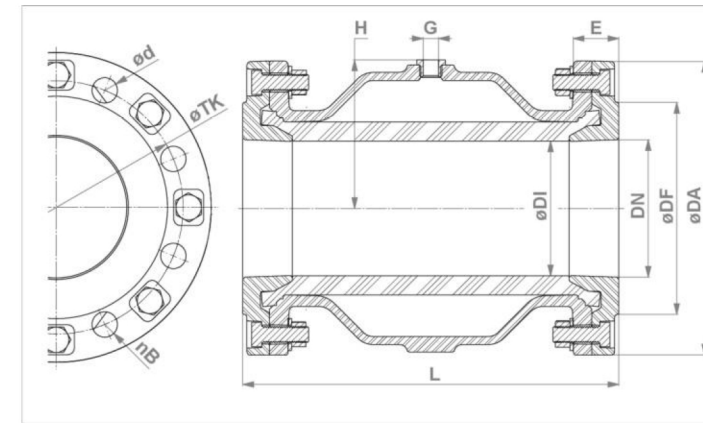
Valve finish:
Powder coated 60-80 μm white RAL9010



Air operated Pinch Valves – Flange Connection



Exempl. view:



Flange variations:

- ① aluminum flange
- ② aluminum flange with steel/ stainless steel bushing
- ③ aluminum flange with internal thread
- ④ aluminum flange with flange sleeve

DN (mm)	DI (mm)	DA (mm)	DF (mm)	nB***	d (mm)	TK (mm)	L (mm)	G (mm)	H (mm)	E (mm)	Weight(kg) alt-flanges	Volume(l)* (ca./approx)	PS max. (bar)	Internal threath G1	GT (mm)
40	40	150	88	4	18	110	155	G1/4"	56	28	2, 9	0, 20	6	G1½	19
50	50	165	102	4	18	125	183	G1/4"	65	30	3, 8	0, 30	6	G2"	24
65	65	185	122	4	18	145	183	G1/4"	81	28	4, 3	0, 45	6	G2½	22
80	80	200	138	8	18	160	228	G1/4"	95	31	5, 6	0, 95	6	G3"	22
100	100	220	158	8	18	180	280	G1/4"	112	35	8, 5	1, 70	6	G4"	20
125	118	250	184	8	18	210	348	G1/4"	136	40	12, 1	3, 50	6	—	—
150	145	285	212	8	22	240	418	G1/4"	160	43	17, 0	7, 00	6	—	—
200	190	340	268	8	22	295	558	G3/8"	206	60	33, 2	15, 50	4	—	—
250	250	395	320	12	22	350	680	G1/2"	266	67	56, 0	30, 00	3	—	—
300	300	445	370	12	22	400	820	G1/2"	306	70	86, 0	49, 00	3	—	—

* Volume= Control volume with closed sleeve

Flange connection pursuant to DIN PN 10. ANSI on request

** Flange sleeve sealing increases the Dimension L (DN 40 - 100)

*** Number of holes

Sleeves:

natural rubber (NR) anti-abrasive, NR food quality, NR high temp, EPDM, EPDM food black, EPDM food pale, NBR, NBR food black, NBR foodpale, FPM/FKM, Silicone, CR, CSM, IIR

Pinch Valve Accessories to be found on our data sheet "Pinch Valve Accessories".

VMP

VMP series pneumatic pinch valve



DN10-DN15



DN20-DN25



DN32-DN50

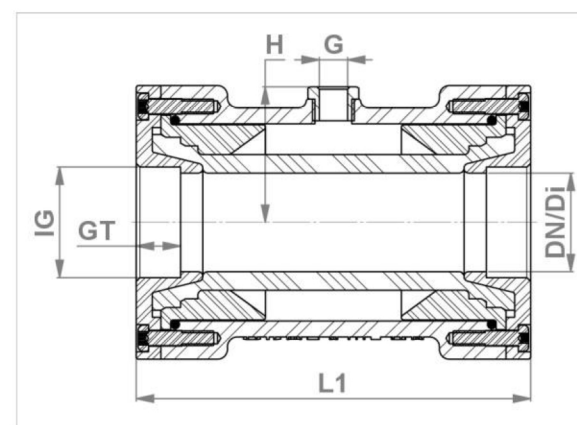
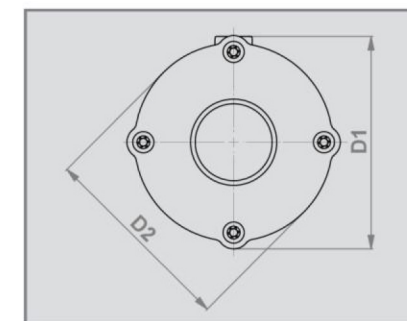
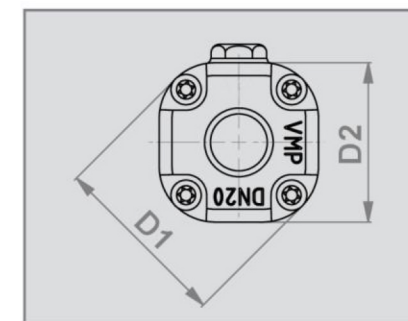
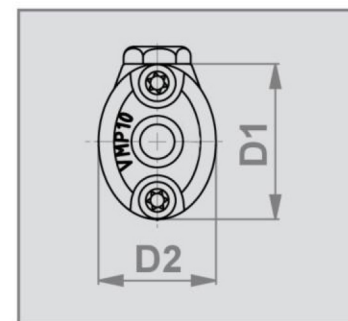
● Reliable, economical!

Automatic shut off the compact pneumatic valve for dust particles
Powder, suspension, sewage, exhaust and so on.

Advantages:

- Compact surface length reduced by 30%
- Weight reduction by 25%
- Suitable for food applications
- Explosion protected design
- Excellent weather resistance
- Complete free passage
- No plugging
- 100% tight shut off
- Easy maintenance and re-sleeving

Air operated Pinch Valves – Internal Thread Connection



Industrial areas:

Pneumatic conveying systems/pigments and granules/
ceramics/glass/plastic industry/pharmaceutical/food indus-
try/extraction systems/dosing systems/filling and weighing
systems/air venting systems

DN/Di (mm)	IG (inch)	GT (mm)	L1 (mm)	D1 (mm)	D2 (mm)	G (inch)	H (mm)	PS max. (bar)	screws	volume (ml) (ca/approx)	Weight(kg)
10	G 3/8"	12	80	45	34	G 1/8"	27,5	6,0	4	15	0,12
15	G 1/2"	14	95	55	46	G 1/8"	32,5	6,0	4	25	0,31
20	G 3/4"	17	103	63	56	G 1/8"	34,5	6,0	8	40	0,31
25	G1"	17	120	75	70	G 1/8"	40,0	6,0	8	80	0,50
32	G1 1/4"	18	135	98	90	G 1/4"	48,0	4,5	8	150	0,66
40	G1 1/2"	18	160	111	103	G 1/4"	55,0	4,5	8	300	0,97
50	G2"	24	170	130	120	G 1/4"	64,0	4,0	12	450	1,50

* Volume= Control volume with closed sleeve

** DN15=0,4kg/weight for VMP valves w/stainless steel socket= DN10=0,3/DN15=0,4kg

Connection type:

Internal Thread (DIN ISO 228) or NPT, others on request.

Body /socket ends***

POM naturalwhite FDA approved
POM black excellent weather resistance
POM conductive for areas at risk of explosions

*****Stainless steel (1.4404) socket end covers available in nominal diameter 10+15.

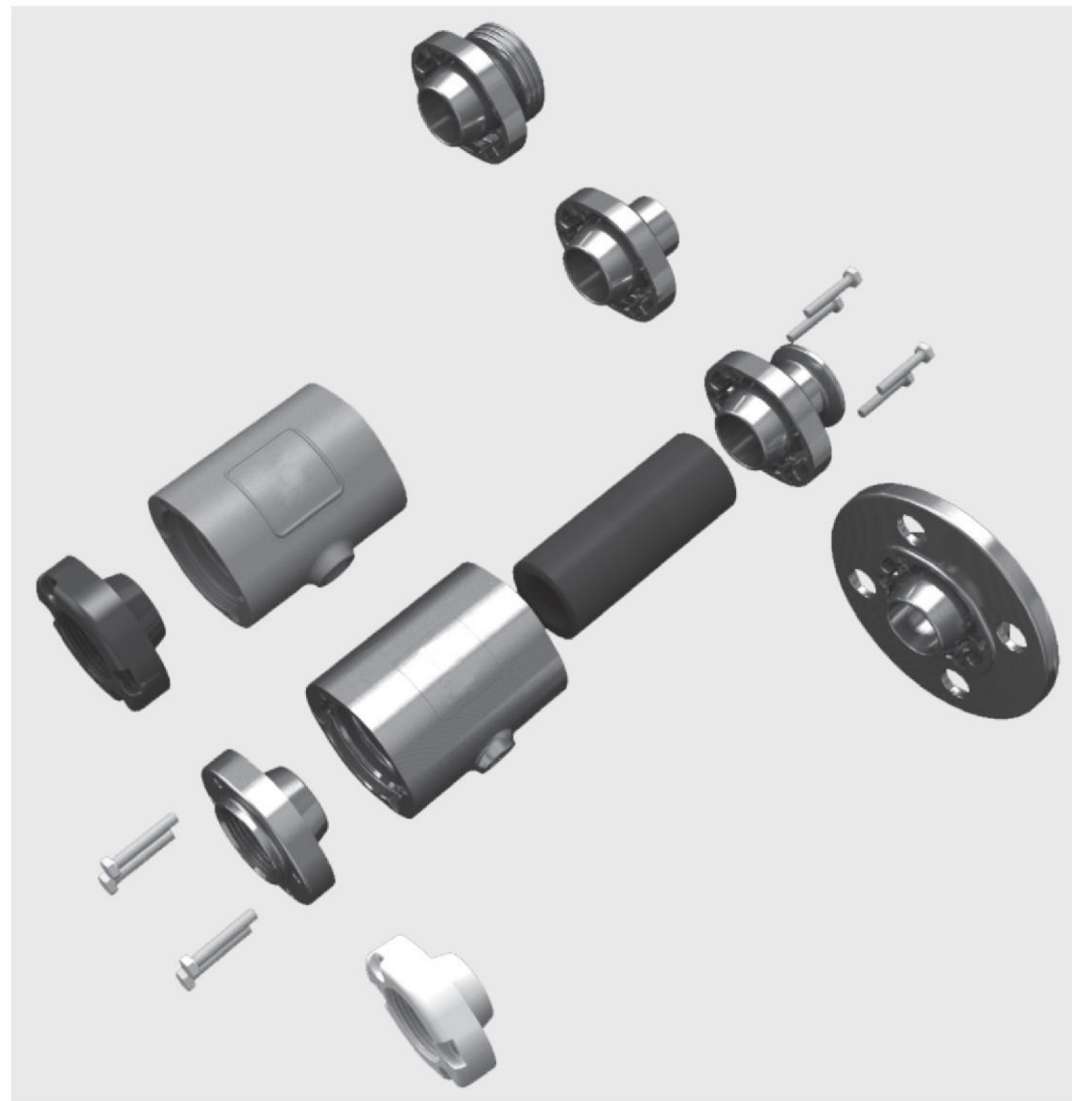
Sleeves:

Natural rubber (NR) anti-abrasive, NR food quality, EPDM, NBR, CSM, IIR, CR (neoprene), others on request.

Technical details subject to change without notice.

VMC

VMC series pneumatic pinch valve



Flange



Internal Thread



Tri-Clamp



Weld-on ends



Threaded spigot

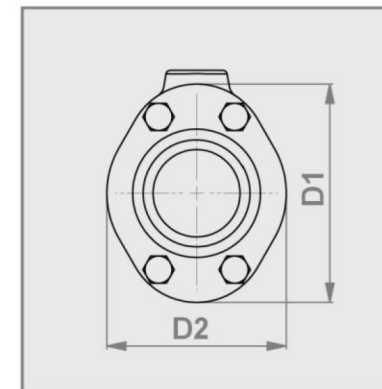
● **The flexible modular system for detachable and aseptic piping connections!**

The ideal solution for isolation and regulation of solids of all kinds, suspensions, pastes, gaseous, fibrous and viscous media.

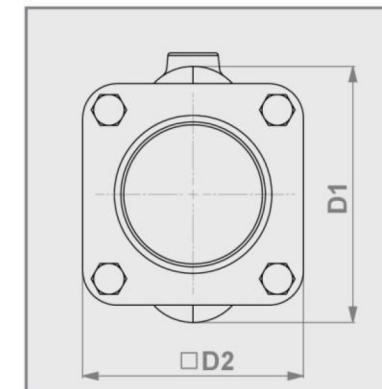
Advantages:

- Flexible modular system
- Various connection options
- Extremely compact
- Light weight
- Complete free passage
- No dead spots
- Easy maintenance and re-sleeving
- 100% tight shut off
- Competitive

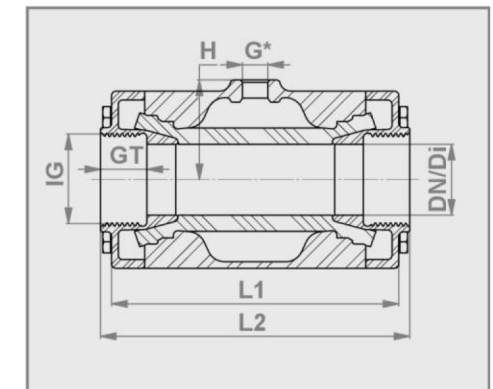
Air operated Pinch Valve – Internal Thread connection (G/N)



DN10 – DN50



DN65 – DN100



Exempl. view (DN10 – DN50)

Connection type:
Internal Thread Connection according to
DIN EN ISO 228 "G" or
ANSI/ASME B1.20.1 "NPT"

Body:
DN 10-100: Stainless steel 1.4408 (E)
DN 20-100: Aluminum AISi0Mg (A)
DN 10-15: Plastic POM (P) natural white
DN 10-15: Plastic POM (P) conductive

(Internal Thread) Socket ends:
DN 10-100: Stainless steel 1.4404 (E)
DN 20-50: Plastic POM (P) natural white
DN 20-50: Plastic POM (P) conductive for hazardous areas

Valve finish:

Stainless steel: Electropolished
Wetted parts DN10-50 = Ra 0.5 /
DN65-100 = Ra 0.8. Others on request

Aluminum: Powder coated 60-80 μm RAL7035

DN/Di (mm)	D1 (mm)	D2 (mm)	IG (inch)	GT (mm)	L1 (mm)	L2 (mm)	G (inch)	H (mm)	¹ vol.(ml) (approx)	Weight(kg) (EE)	Weight(kg) (AE)	Weight(kg) (AP)	Weight(kg) (PE)
10	46	35	G 3/8"	12	68	80	G 1/8"	23	0,03	0,5	—	—	0,2
15	56	47	G 1/2"	15	85	95	G 1/8"	28	0,05	0,8	—	—	0,4
20	62	49	G 3/4"	17	93	103	G 1/8"	32	0,07	0,8	0,5	0,4	—
25	72	57	G 1"	20	110	120	G 1/8"	37	0,09	1,3	0,8	0,5	—
32	80	66	G 1 1/4"	21	130	140	G 1/4"	45	0,13	1,7	1,1	0,7	—
40	90	77	G 1 1/2"	21	150	160*	G 1/4"	50	0,22	2,4	1,5	0,9	—
50	110	88	G 2"	25	175	185	G 1/4"	60	0,36	3,6	2,2	1,6	—
65	139	115	G 2 1/2"	30	173	200	G 1/4"	74	0,44	4,0	3,0	—	—
80	173	133	G 3"	33	213	230	G 1/4"	90	0,88	5,6	4,4	—	—
100	203	156	G 4"	20	264	280	G 1/4"	107	1,80	11,0	6,6	—	—

¹ Volume=Control volume with closed sleeve

* Alternatively available is our K-variant – length = 150mm